

MANUAL LINE DRIVER

Installation & User's Guide

Date 05/2018 Rev. 01



MODEL

240.010



antal

Antal srl - Via del Progresso, 10 - 35127 Padova - Italy - www.antal.it
Tel. +39 049 8701265 / 8702655 - Fax: +39 049 760906 - antal@antal.it

INSTALLATION

ABOUT MANUAL LINE DRIVER

The control system is connected to a traveler on a closed circuit and ensures efficient control and a clean layout.

The system uses a self tailing pulley which operates in both directions with a textile gripping system that is efficient even if the circuit is not under strain and causes no wear in the rope.


A clutch pin sets the direction in which the traveler moves, or allows for it to be locked in the required position.

The power ratio obtainable with a normal (250 mm) handle is 8 to 1, which is much better than a tackle can offer; moreover, this system has a very limited size and weight.

APPLICATIONS

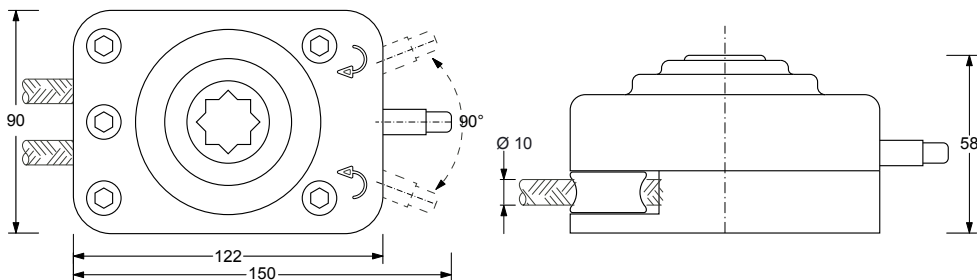
Manual Line Driver allows to transform the rotational movement of the winch handle in a linear movement in both directions.

Manual Line Driver originally born for the nautic market was realized for the adjusting of the mainsail, the genoa or the spinnaker pole car. Today, Manual Line Driver is also used for other purposes outside the nautic market, e.g. tensile structures or awnings.

 Since Manual Line Driver uses a self-tailing sheave, it is advisable the use of textiles of at least 10mm diameter

MODEL	Ø LINE (mm)	POWER	WEIGHT kg	SWL kg	SCREWS* N x Ø (mm)
240.010	10	8:1	1,4	150	3 x 8 mm

* Not included

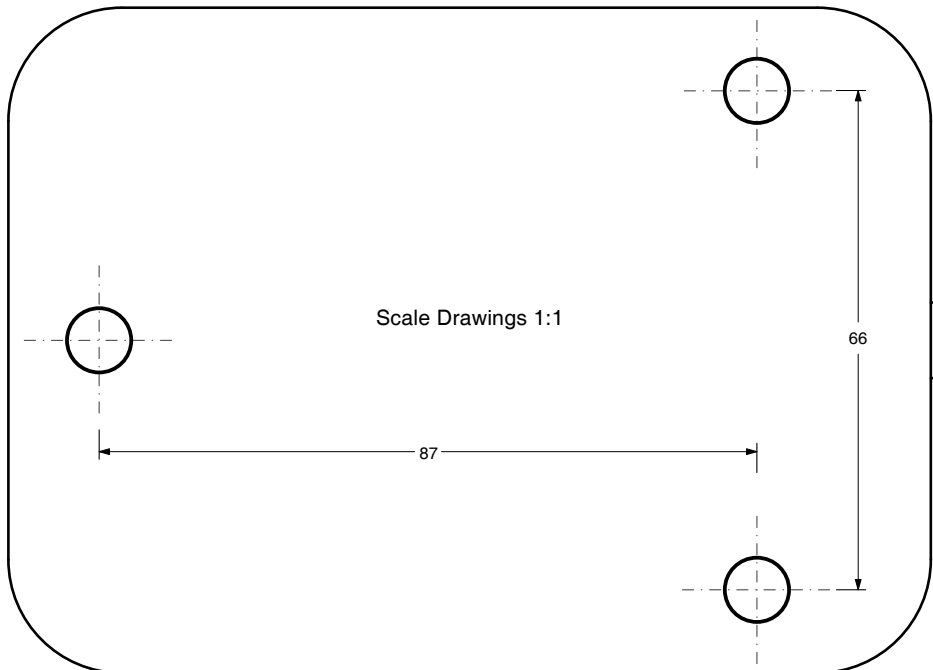


INSTALLATION

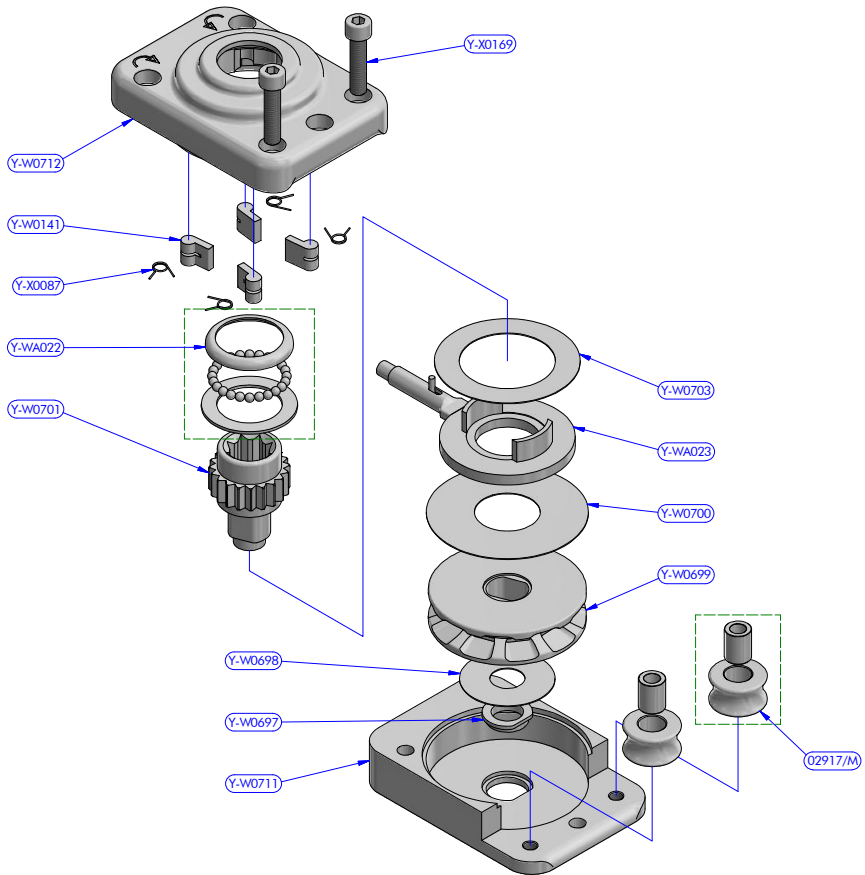
To install Manual Line Driver, you will need: drill, sealant, 3 x Ø8 mm hex socket cap screws (UNI 5931, screws not included).

Refer to the exploded view drawing to identify the parts of Manual Line Driver

- ① Use the base (Y-W0711) as template to mark the anchoring holes on the deck alternatively refer to the below real size drilling template. Thus drill the deck
- ② Cut screws to required length. Use Loctite 222 or 243 on fasteners' thread to avoid unscrewing. Use sealant around all the anchoring holes on the deck under the Manual Line Driver base. Thus tighten all anchoring screws and nuts.
- ③ Insert the line when Manual Line Driver is closed and installed. In case the line is spliced or in case it does not go through, it is necessary to open Manual Line Driver. Refer to the exploded view drawing to proceed to opening Manual Line Driver.



EXPLODED VIEW



PART LIST

CODE	DESCRIPTION	MATERIAL	Q.TY
02917/M	Sheave	Various	2
Y-W0141	Pawl	S.Steel	4
Y-W0697	Bushing	Brass	1
Y-W0698	Washer	Tufnol	1
Y-W0699	Toothed sheave	Aluminium	1
Y-W0700	Washer	Tufnol	1
Y-W0701	Main shaft	S.Steel	1
Y-W0703	Washer	Tufnol	1
Y-W0711	Lower cheekplate	Aluminium	1
Y-W0712	Upper cheekplate	Aluminium	1
Y-WA022	B.B. package	Various	1
Y-WA023	Selector lever	Various	1
Y-X0087	Pawl spring	S.Steel	4
Y-X0169	Screw	S.Steel	2